



Miller Diversified Realty Corporation

3410 Briarfield Blvd., Suite A Maumee, Ohio 43537 P. 419.867.9119 F. 419.867.7924

Access Pointe East

Northwood, OH

Improved Lots¹

- Heavy duty paved roadway
- Water
- Storm Sewer
- Natural Gas
- Signalized intersection
- Sanitary Sewer
- Electrical
- Telephone

Details

- 2 minutes to I-75 at Wales Road exit
- 9 minutes to downtown Toledo and new Jeep plant
- 2 minutes to Owens Community College
- Tax incentive programs available through Wood County and/or City of Northwood for qualified purchases
- Lot splits available to meet purchaser requirements²

Lot	Acreage	Zoned
Lot 1	61.7	M-2
Lot 2	1.7	C
Lot 3	1.4	C
Lot 4	1.2	C
Lot 5	3.0	C
Lot 8	6.2	M-2
Lot 9	16.9	M-2
Lot 10	9.6	M-2
Lot 11	20.9	M-2

For More Information, Contact:

Jerry Miller, CCIM or Ron Loeffler

P. 419.867.9119 F. 419.867.7924

¹Improvements installed in part of assessment basis. Projected assessment is charged per lineal front foot per year.

²Lot splits require approval of Wood County, City of Northwood and Miller-Dillin Development, LLC. Lot splits may require extensions of additional utility services. Lot pricing may be subject to change with splits.



Miller Diversified Realty Corporation

3410 Briarfield Blvd., Suite A Maumee, Ohio 43537 P. 419.867.9119 F. 419.867.7924

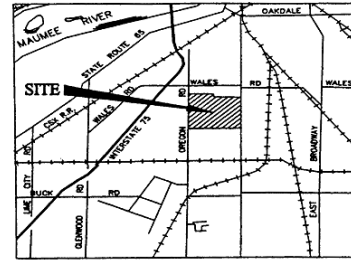
A Preliminary Drawing of ACCESS POINTE EAST PLAT 1 Part of river Tract 83, and part of the NE 1/4 of Sec. 24, T3 of U.S.R., City of Northwood, Wood County, Ohio

Owned By:
Carol Caple & Jack Caple

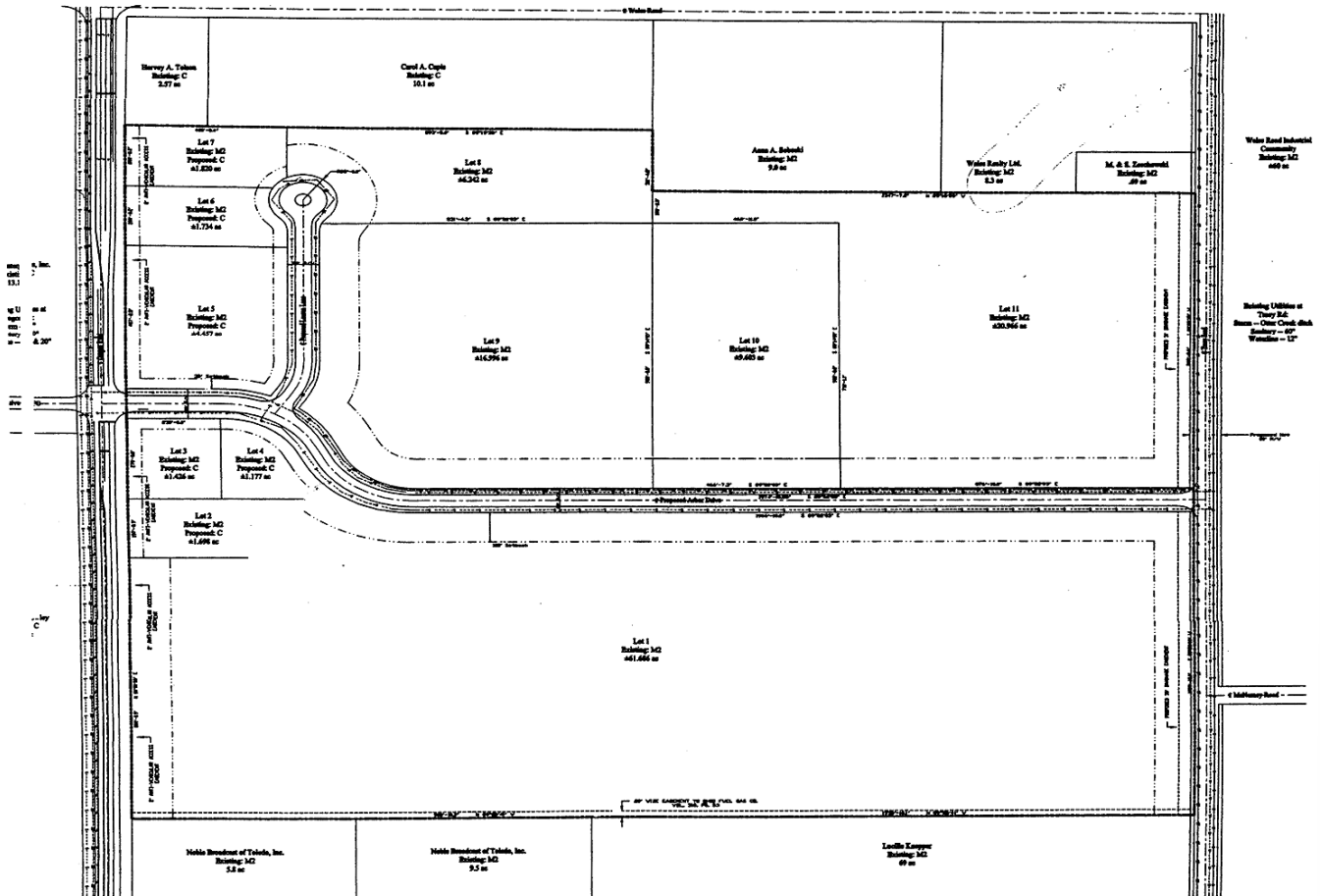
Developed By:
Miller-Dillin Development, LLC

Acreage:
±135.305 ac
Elevation ±615'

Site Analysis:
Number of Lots = 13
Storm Sewer
Sanitary Sewer
Waterline
Natural Gas
Underground Electric, Phone, and Cable



Site Location Map



Access Pointe East

1" = 200'

